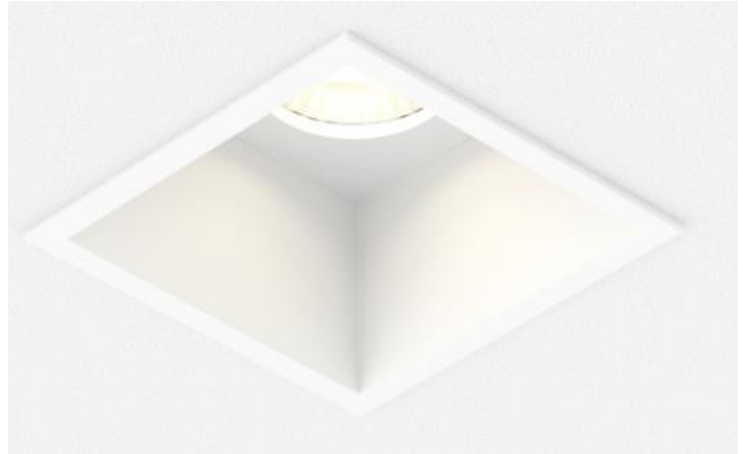
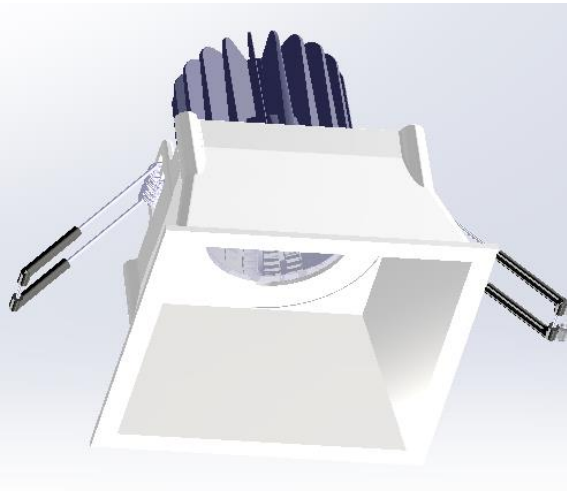
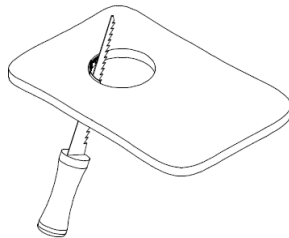


## LUNA 3 AQ DOWNLIGHT INSTALLATION INSTRUCTIONS



**WARNING** - RISK OF FIRE AND ELECTRICAL SHOCK. FIXTURE MUST BE INSTALLED BY A QUALIFIED ELECTRICIAN ONLY. FIXTURE IS INTENDED FOR INSTALLATION IN ACCORDANCE WITH THE NATIONAL ELECTRICAL CODE, LOCAL AND FEDERAL SPECIFICATIONS. DISCONNECT POWER AT ELECTRICAL PANEL BEFORE SERVICING. **CONNECTION OF LUMINAIRE TO POWERED DRIVER WILL RESULT IN PERMANENT DAMAGE TO THE LED AND VOIDED PRODUCT WARRANTY.** **RETAIN THESE INSTRUCTIONS FOR MAINTENANCE REFERENCE.**

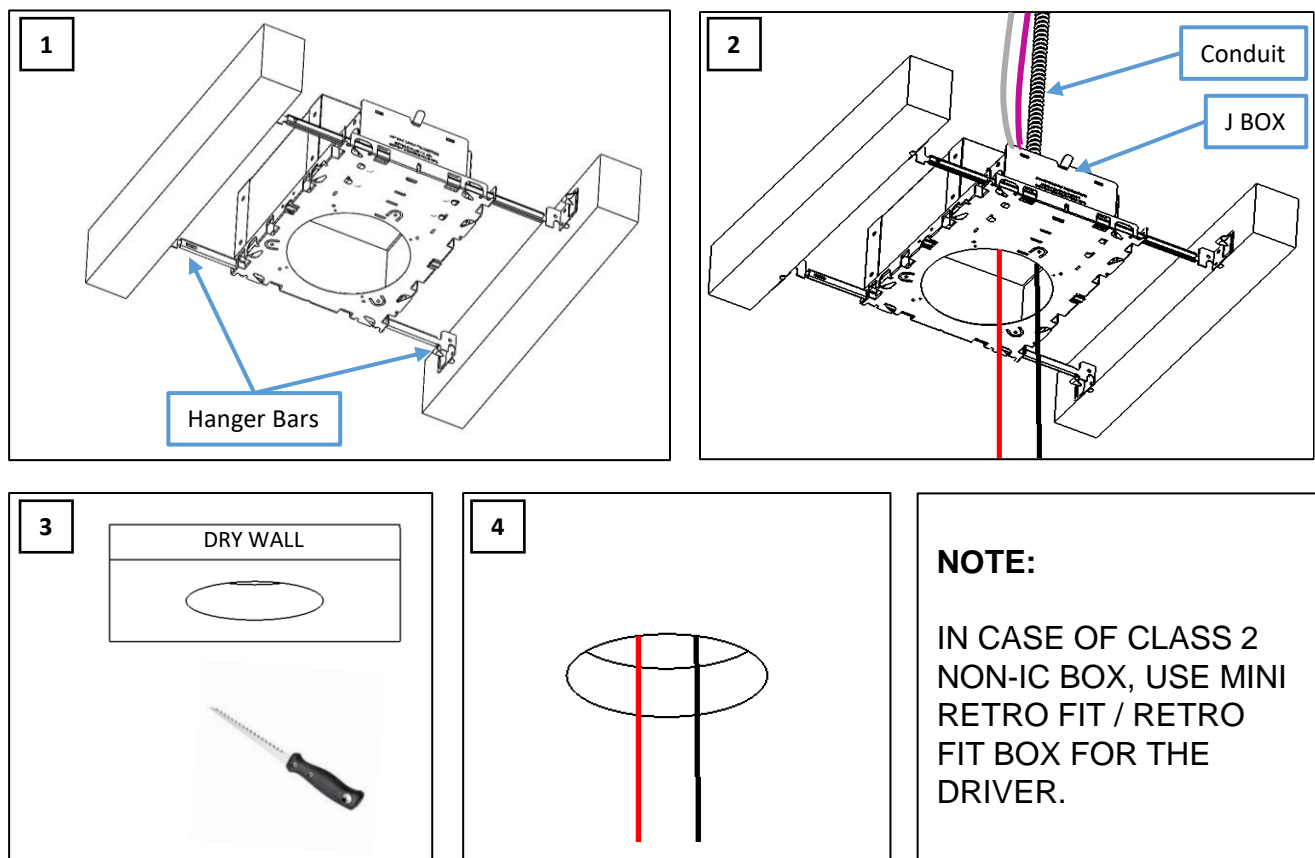
## CUTOUT TABLE



FIXTURE	CUTOUT
LUNA 3 AQ	94mm/ 3.7" x 94mm/ 3.7"

**NOTE:** ROUND FRAME INSTALLATION SHOWN, FOLLOW SAME PROCEDURE FOR SQUARE FRAME.

# IC / NON-IC BOX INSTALLATION (NEW CONSTRUCTION)



## NOTE:

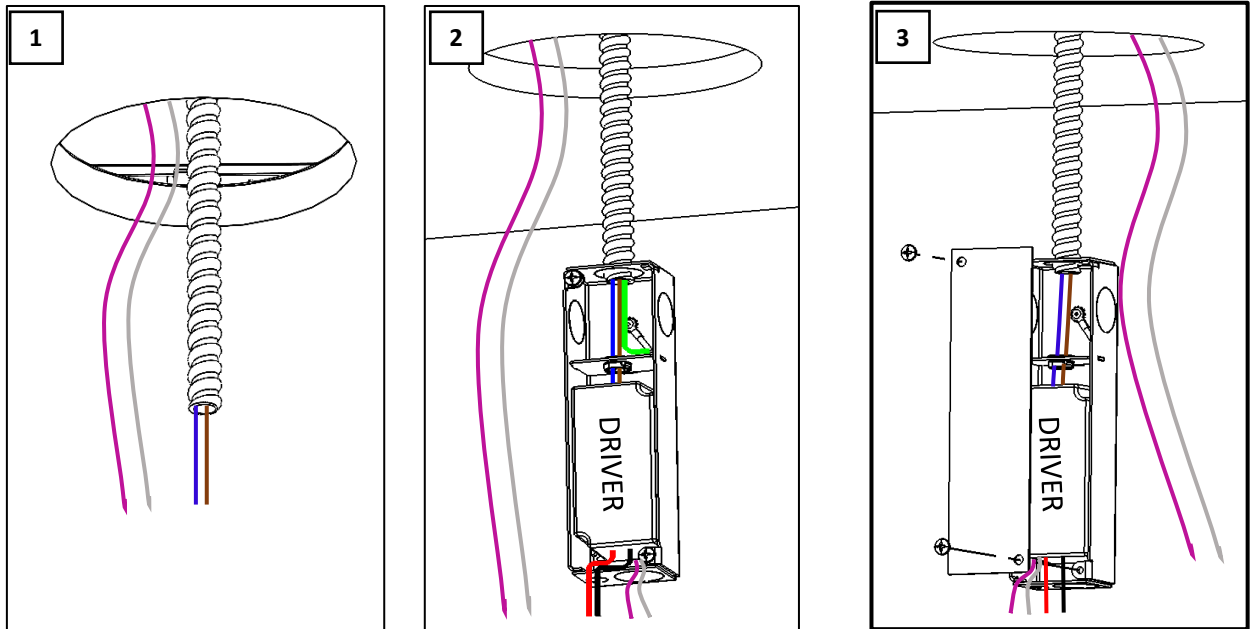
IN CASE OF CLASS 2 NON-IC BOX, USE MINI RETRO FIT / RETRO FIT BOX FOR THE DRIVER.

## NOTE:

- IN CASE OF ELV, NON-DIM AND BLUETOOTH DRIVER, PURPLE & GRAY WIRES ARE ABSENT.
- RUNNING 0-10V DIMMING WIRES IN THE SAME CONDUIT AS LINE VOLTAGE IS NOT RECOMMENDED. THEY NEED TO BE RAN SEPARATELY OR AT LEAST SEPARATED BY A CONTINUOUS BARRIER.

1. INSTALL IC RATED BOX USING HANGER BARS ABOVE THE CEILING. (FIGURE 1).
2. KNOCK OUT A HOLE IN THE J BOX AND RUN THE CONDUIT THROUGH IT. PLACE THE DRIVER INSIDE THE J BOX AND CONNECT TO THE POWER LINES PULLED THROUGH THE CONDUIT. (FIGURE 2)
3. IF IT IS A 0-10V DRIVER, CONNECT THE WIRE (PURPLE AND GRAY) TO THE DIMMER MODULE. AND RUN THE LOW VOLTAGE WIRE (RED & BLACK) THROUGH THE IC BOX, OUT THROUGH THE OPENING BEFORE INSTALLING THE DRYWALL CEILING. (FIGURE 2)
4. CUT A HOLE IN THE CEILING DRYWALL USING THE HOLE ON THE IC BOX AS A REFERENCE. (FIGURE 3)
5. ATTACH THE DRYWALL CEILING AND FINISH. MAKE SURE THE LOW VOLTAGE LINES HANGS OUT SLIGHTLY FROM THE OPENING. (FIGURE 4)

# MINI RETROFIT/ RETROFIT BOX INSTALLATION

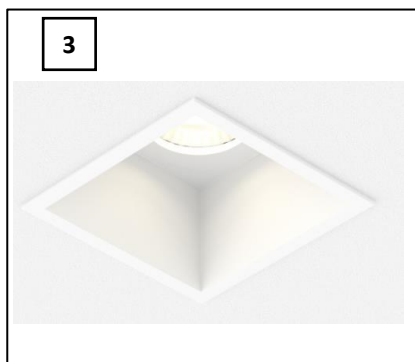
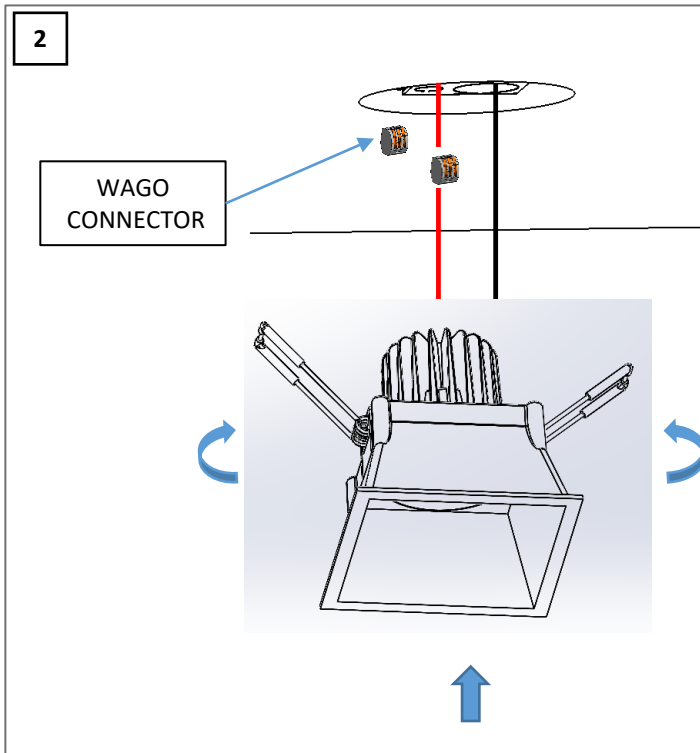
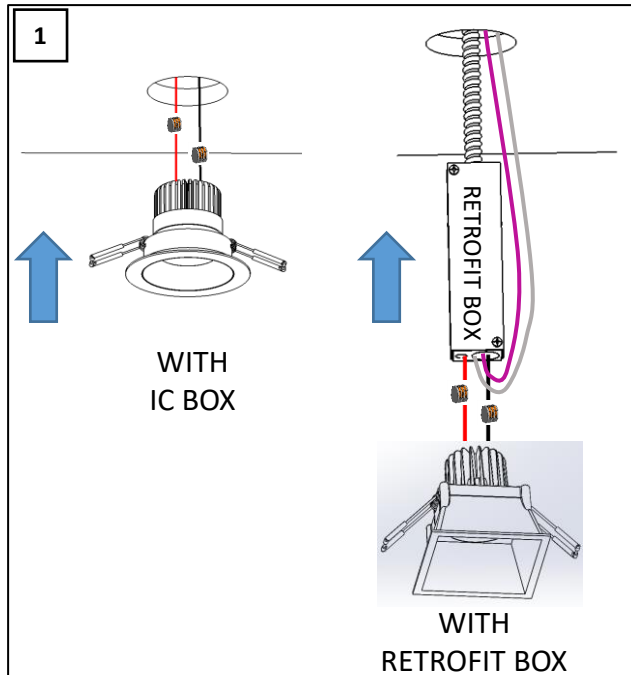


## NOTE:

- IN CASE OF ELV, NON-DIM AND BLUETOOTH DRIVER, PURPLE & GRAY WIRES ARE ABSENT.
- RUNNING 0-10V DIMMING WIRES IN THE SAME CONDUIT AS LINE VOLTAGE IS NOT RECOMMENDED. THEY NEED TO BE RAN SEPARATELY OR AT LEAST SEPARATED BY A CONTINUOUS BARRIER.

1. CUT A HOLE IN THE CEILING DRYWALL AS PER THE CUT-OUT TABLE. ATTACH THE DRY WALL CEILING AND FINISH. MAKE SURE THE FLEXIBLE CONDUIT (RED & BLACK) AND DIMMING WIRES (PURPLE & GRAY) FROM THE DIMMER MODULE MUST HANG OUT SLIGHTLY FROM THE OPENING. (FIGURE 1)
2. REMOVE COVER OF THE RETROFIT BOX, KNOCK OUT AN APPROPRIATE SIZED OPENING PER THE CONDUIT BEING USED. ATTACH THE CONDUIT TO THE RETROFIT BOX USING A SUITABLE GROMMET, CONNECT THE GREEN GROUND WIRE FROM THE RETROFIT BOX TO THE GROUND WIRE FROM THE CEILING. CONNECT POWER SUPPLY WIRES FROM THE DRIVER TO THE MAIN LINE WIRES ON THE CEILING. BLUE TO NEUTRAL AND BROWN TO LINE. (FIGURE 2)
3. IF USING A 0-10V DRIVER, CONNECT THE WIRES (PURPLE & GRAY) TO THE WIRE COMING FROM THE DIMMER MODULE USING THE WAGO.
4. ATTACH RETROFIT BOX COVER USING THE PROVIDED TWO SCREWS. (FIGURE 3)

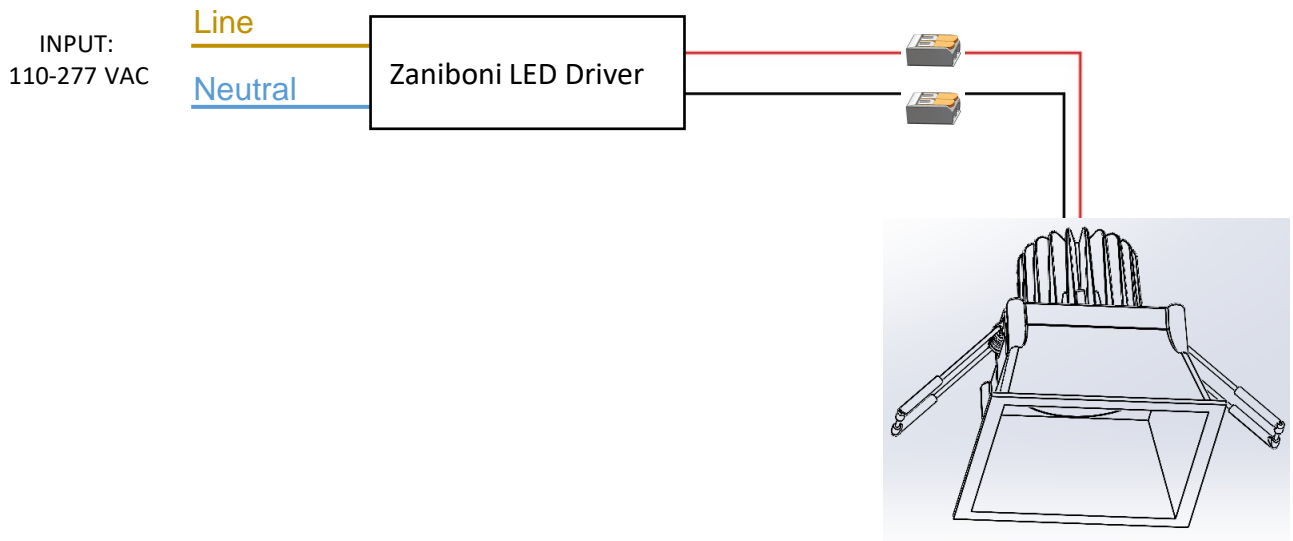
# FIXTURE INSTALLATION



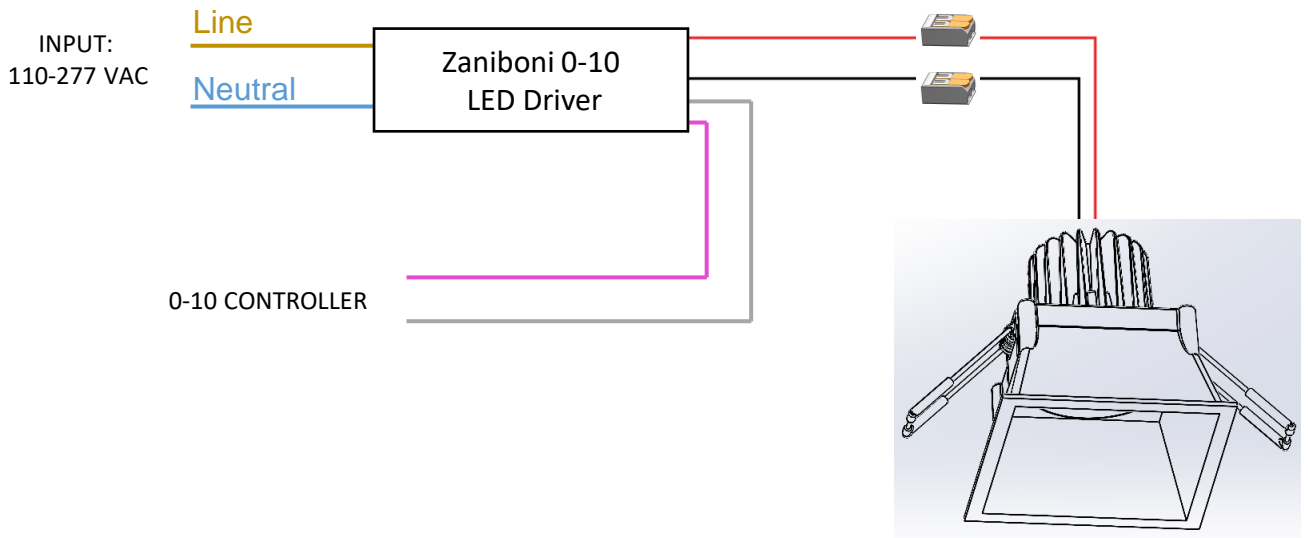
1. CONNECT DOWNLIGHT FIXTURE, RED TO RED AND BLACK TO BLACK USING THE WAGO CONNECTOR. (FIGURE 1)
2. CONNECT DIMMING WIRES, IF AVAILABLE, PER DIMMER MANUFACTURER'S INSTRUCTIONS. DIM-(GRAY), DIM+(PURPLE), 10V+(YELLOW).
3. PUSH THE CONDUIT AND RETROFIT BOX INTO THE CEILING. (FIGURE 1)
4. OPEN SPRINGS AND INSERT THE FIXTURE INTO THE CUT-OUT OPENING. MAKE SURE ALL THE WIRES ARE ALL THE WAY IN THE CEILING. (FIGURE 2)
5. TURN ON THE POWER. (FIGURE 3)

# WIRING DIAGRAM – LINE VOLTAGE

- **ELV, NON-DIM, BLUETOOTH DRIVER**



- **0-10 DRIVER**



*\*The manufacturer reserves the right to change or modify the design, dimensions and specifications at anytime without notice. The manufacturer accepts no liability for consequential damage which is occasioned to the user base on the data provided.*

Zaniboni Lighting, 101 N Garden, Ste 230 • Clearwater, FL 33755 - Ph +17272130410 • Fx +17276839720 • [www.zanibonilighting.com](http://www.zanibonilighting.com)  
Zaniboni Lighting shall not be held liable for any damages arising out of the use or misuse of its products nor any damages arising out of the alteration or modification of the instructed installation of its products.